

This standard detail is intended for general information only and all details should be checked against all relevant supporting test evidence, certification and installation guidelines. In line with the company's policy of continual development, details are subject to change and/ or withdrawal therefore you must ensure this is the latest published detail and instructions.

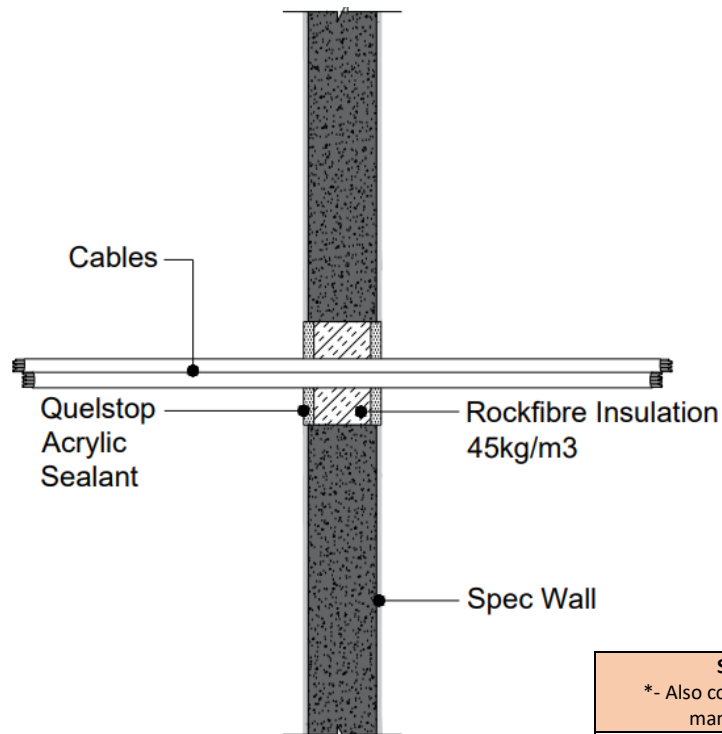
**Additional Instructions**

Specwall wall system is to be constructed as per the manufacturer's guidelines – ( see [www.specwall.com](http://www.specwall.com) ) and in accordance with section 4.3.1 of WF Report 521597 page 17.

Rock fibre insulation of a minimum density of 45kg/m<sup>3</sup> should be friction fitted within the aperture / around the services and must fill the entire depth of the wall and be set back 10mm each side. QuelStop Intumescent Acrylic sealant to be then installed on both sides of the wall on the face of the insulation to 10mm depth so it finishes flush with the faces of the wall.

The distance between the aperture edges of penetration seals in a building element shall be a minimum 100mm. This is on the basis of the spacing requirements as set out in BS EN 1366-3:2021 Section 13.7 (Minimum 100mm unless they have been tested otherwise – which they are not currently.) The distance between the aperture edge of a service penetration seal and any other penetration (e.g., door) in a building element shall be a minimum 200mm.

Quelfire Products Required	
Product Code	Description
QSS310	QuelStop Intumescent Acrylic Sealant



Service Type	Size of services	QuelStop Acrylic Sealant (Installed both sides)	Backing Material	Fire Resistance Rating
Cable	≤Ø21mm	Maximum Aperture 100 x 100mm 10mm Depth	Rock Fibre ≥45kg/m <sup>3</sup> density	120 minutes Integrity 45 minutes Insulation
	≤Ø50mm			45 minutes Integrity 45 minutes Insulation
Cable Bundle	≤Ø42mm Bundle of ≤Ø21mm cables/ Coaxial cables			120 minutes Integrity 45 minutes Insulation
Coaxial Cable	≤21mm			120 minutes Integrity 45 minutes Insulation
	≤28mm	45 minutes Integrity 45 minutes Insulation		

Spacing as per BS EN 1366-3: 2021, Section 13.7	
*- Also considering any requirements the supporting construction manufacturer has regarding spacing between openings	
Minimum distance from edge of opening to another aperture with a service penetration tested to BS EN 1366-3	100mm*
Minimum distance from edge of opening to another aperture with a penetration <b>not</b> tested to BS EN 1366-3	200mm*
<b>To be read in conjunction with:</b>	WF Report 521597 Page 23 & 24
<b>Test standard:</b>	BS EN1366-3:2021
<b>Substrate minimum thickness:</b>	75mm
<b>First Service Support:</b>	≤400mm
<b>Drawing Scale:</b>	Not to Scale
<b>Issue Number:</b>	1
<b>Date of Issue:</b>	January 2023
<b>Detail Reference:</b>	QSS-SP75-01

**Important Information:**

- The supporting construction must be installed in accordance with the manufacturer's guidelines and must be capable of achieving the required fire rating of the firestop.
- All Services should be adequately supported either side of the firestop to ensure that no load is transferred onto the firestop seal.

**Scope and Liability:**

- Any Information provided by or on behalf of Quelfire Limited is provided for general information only. It is not intended to amount to advice on which you should rely. You must obtain professional or specialist advice before taking, or refraining from, any recommendation or action.
- The summary is not exhaustive and does not consider all issues relevant to the enquiry. It is limited to the information and time available to us. We have not verified any information made available to us by you or any other source, nor have we carried out a physical inspection of any property. We make no representations, warranties or guarantees, whether expressed or implied, that any information is accurate, complete or up to date.
- We do not accept a duty of care to you or any other person in respect of the enquiry, nor do we accept any liability to you or any other person for any loss arising out of or in connection with the enquiry or any reply provided by us. Different limitations and exclusions of liability arising as a result of the supply of any products or services by us to you, and these will be set out in our terms and conditions of supply, a copy of which is available on request.
- Full terms and conditions of sale are available at <https://www.quelfire.co.uk/terms-conditions-of-sale/>