

This standard detail is intended for general information only and all details should be checked against all relevant supporting test evidence, certification and installation guidelines. In line with the company’s policy of continual development, details are subject to change and/ or withdrawal therefore you must ensure this is the latest published detail and instructions.

Additional Instructions

Floors must have a minimum thickness of 100mm and comprise of concrete, aerated concrete or masonry, with a minimum density of $\geq 635\text{kg/m}^3$.

QuelStop Intumescent Acrylic Sealant installed one side only to the minimum stated depth bedded on the minimum stated backing material. This detail can be installed either side of the supporting construction in accordance with BS EN1366-4: 2021 Section 13.3 Seal Position.

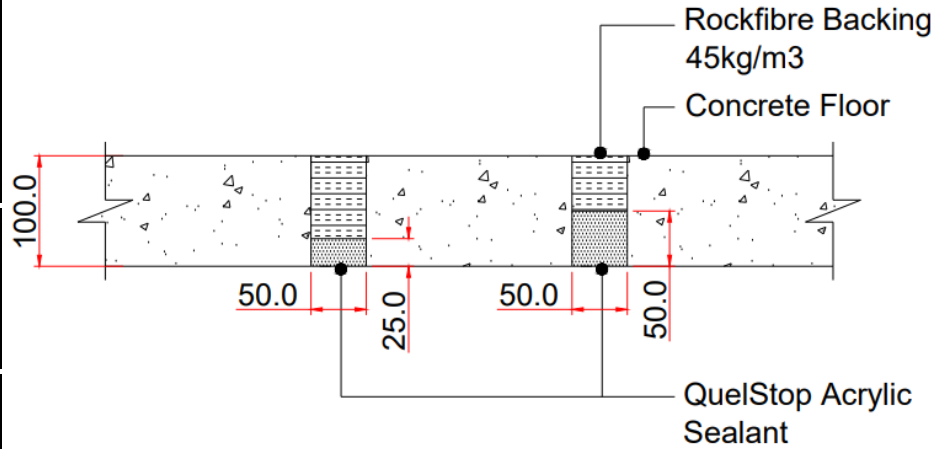
As rock fibre backing material was used in the fire test, this or ceramic wool must be used and meet the minimum requirements stated in the table below to be in accordance with BS EN 1366-4:2021 section 13.5.6. Please refer to Quelfire’s Knowledge Hub article for further information: [Does backing material matter with linear gap seals?](#)

**** Test Evidence**

This detail will be included in a future update of the QuelStop Intumescent Acrylic Sealant Classification Report. The fire test report detailed is not for general distribution but can be requested by the project’s qualified fire consultant/ engineer if they contact the Quelfire Technical Team directly.

Test Condition	Designation
Integrity	E
Insulation	I
Horizontal Supporting Construction	H
Vertical Supporting Construction - Vertical	V
Vertical Supporting Construction - Horizontal	T
No Movement Capability	X
Movement Capability (%)	M00
Joint Width Range (mm)	W w1 to w2
Manufactured Splice	M
Field Splice	F
Manufactured and field Splice	B

Substrate	Depth	Backing Material	Backing Material Depth	Fire Rating
Concrete - Concrete	$\geq 25\text{mm}$ (Single Side)	Rock fibre with a minimum density of 45kg/m^3 / ceramic wool	$\geq 75\text{mm}$	E 240 EI 90 - H - X - F - W 00 to 50
	$\geq 50\text{mm}$ (Single Side)		$\geq 50\text{mm}$	E 240 EI 180 - H - X - F - W 00 to 50



Quelfire Products Required	
Product Code	Description
QSS310	QuelStop Intumescent Acrylic Sealant

Application	Page No.
100mm or thicker floors (Single side)	1
100mm or thicker floors (Both sides)	2
150mm or thicker floors (Single side)	3

BS EN 1366-4: 2021 Section 13.3 Seal Position

BS EN 1366-4:2021 Section 13.3 states:
Test results are valid only for the position (see image below) in which the seal was tested, except that where a linear joint seal was fitted flush with the surface of the supporting construction and is exposed to the fire (see Specimen 2) the results will also be applicable to test specimen 3 and 5.

To be read in conjunction with:	WF 542144/R Specimens A & B**
Test standard:	BS EN1366-4
Substrate minimum thickness:	100mm
Drawing Scale:	Not to Scale
Issue Number:	5
Date of Issue:	January 2025
Detail Reference:	QSS-LJ-H-02

Important Information:

- The supporting construction must be installed in accordance with the manufacturer’s guidelines and must be capable of achieving the required fire rating of the firestop.
- All services should be adequately supported on both sides of the firestop to ensure that no load is transferred onto the firestop seal.

Scope and Liability:

- Any information provided by or on behalf of Quelfire Limited is provided for general information only. It is not intended to amount to advice on which you should rely. You must obtain professional or specialist advice before taking, or refraining from, any recommendation or action.
- The summary is not exhaustive and does not consider all issues relevant to the enquiry. It is limited to the information and time available to us. We have not verified any information made available to us by you or any other source, nor have we carried out a physical inspection of any property. We make no representations, warranties or guarantees, whether expressed or implied, that any information is accurate, complete or up to date.
- We do not accept a duty of care to you or any other person in respect of the enquiry, nor do we accept any liability to you or any other person for any loss arising out of or in connection with the enquiry or any reply provided by us. Different limitations and exclusions of liability arising as a result of the supply of any products or services by us to you, and these will be set out in our terms and conditions of supply, a copy of which is available on request.
- Full terms and conditions of sale are available at <https://www.quelfire.co.uk/terms-conditions-of-sale/>

This standard detail is intended for general information only and all details should be checked against all relevant supporting test evidence, certification and installation guidelines. In line with the company’s policy of continual development, details are subject to change and/ or withdrawal therefore you must ensure this is the latest published detail and instructions.

Additional Instructions

Floors must have a minimum thickness of 100mm and comprise of concrete, aerated concrete or masonry, with a minimum density of $\geq 635\text{kg/m}^3$.

QuelStop Intumescent Acrylic Sealant installed to a minimum 25mm depth flush with the surface of the supporting construction on both sides in accordance with BS EN1366-4: 2021 Section 13.3 Seal Position. The QuelStop Intumescent Acrylic Sealant is bedded on a minimum 50mm depth of rock fibre / ceramic wool backing material.

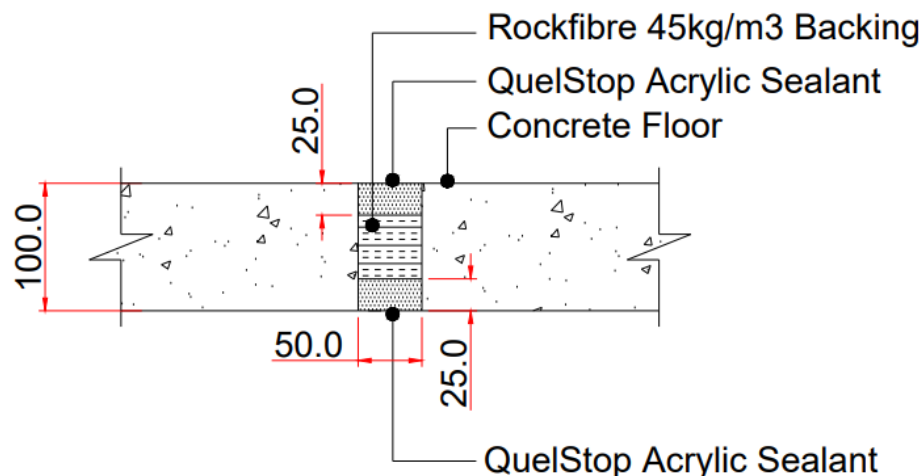
As rock fibre backing material was used in the fire test, this or ceramic wool must be used and meet the minimum requirements stated in the table below to be in accordance with BS EN 1366-4:2021 section 13.5.6. Please refer to Quelfire’s Knowledge Hub article for further information: [Does backing material matter with linear gap seals?](#)

**** Test Evidence**

This detail will be included in a future update of the QuelStop Intumescent Acrylic Sealant Classification Report. The fire test report detailed is not for general distribution but can be requested by the project’s qualified fire consultant/ engineer if they contact the Quelfire Technical Team directly.

Test Condition	Designation
Integrity	E
Insulation	I
Horizontal Supporting Construction	H
Vertical Supporting Construction - Vertical	V
Vertical Supporting Construction - Horizontal	T
No Movement Capability	X
Movement Capability (%)	M00
Joint Width Range (mm)	W w1 to w2
Manufactured Splice	M
Field Splice	F
Manufactured and field Splice	B

Substrate	Depth	Backing Material	Backing Material Depth	Fire Rating
Concrete - Concrete	$\geq 25\text{mm}$ (both Sides)	Rock fibre with a minimum density of 45kg/m^3 / Ceramic wool	$\geq 50\text{mm}$	EI 240 - H - X - F - W 00 to 50



Quelfire Products Required	
Product Code	Description
QSS310	QuelStop Intumescent Acrylic Sealant

Application	Page No.
100mm or thicker floors (Single side)	1
100mm or thicker floors (Both sides)	2
150mm or thicker floors (Single side)	3

BS EN 1366-4: 2021 Section 13.3 Seal Position

BS EN 1366-4:2021 Section 13.3 states:
Test results are valid only for the position (see image below) in which the seal was tested, except that where a linear joint seal was fitted flush with the surface of the supporting construction and is exposed to the fire (see Specimen 2) the results will also be applicable to test specimen 3 and 5.

To be read in conjunction with:	WF 542144/R Specimen E**
Test standard:	BS EN1366-4
Substrate minimum thickness:	100mm
Drawing Scale:	Not to Scale
Issue Number:	5
Date of Issue:	January 2025
Detail Reference:	QSS-LJ-H-02

Important Information:

- The supporting construction must be installed in accordance with the manufacturer’s guidelines and must be capable of achieving the required fire rating of the firestop.
- All services should be adequately supported on both sides of the firestop to ensure that no load is transferred onto the firestop seal.

Scope and Liability:

- Any Information provided by or on behalf of Quelfire Limited is provided for general information only. It is not intended to amount to advice on which you should rely. You must obtain professional or specialist advice before taking, or refraining from, any recommendation or action.
- The summary is not exhaustive and does not consider all issues relevant to the enquiry. It is limited to the information and time available to us. We have not verified any information made available to us by you or any other source, nor have we carried out a physical inspection of any property. We make no representations, warranties or guarantees, whether expressed or implied, that any information is accurate, complete or up to date.
- We do not accept a duty of care to you or any other person in respect of the enquiry, nor do we accept any liability to you or any other person for any loss arising out of or in connection with the enquiry or any reply provided by us. Different limitations and exclusions of liability arising as a result of the supply of any products or services by us to you, and these will be set out in our terms and conditions of supply, a copy of which is available on request.
- Full terms and conditions of sale are available at <https://www.quelfire.co.uk/terms-conditions-of-sale/>

This standard detail is intended for general information only and all details should be checked against all relevant supporting test evidence, certification and installation guidelines. In line with the company’s policy of continual development, details are subject to change and/ or withdrawal therefore you must ensure this is the latest published detail and instructions.

Additional Instructions

Floors must have a minimum thickness of 150mm and comprise of concrete, aerated concrete or masonry, with a minimum density of $\geq 650\text{kg/m}^3$.

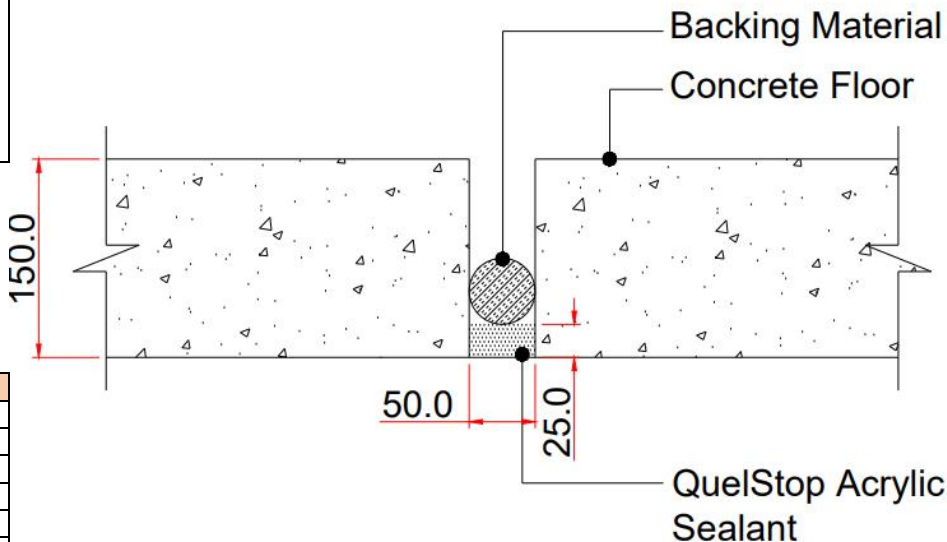
QuelStop Acrylic Sealant installed one side only to the minimum stated depth bedded on the minimum stated backing material.

This detail can be installed either side of the supporting construction in accordance with BS EN1366-4: 2021 Section 13.3 Seal Position.

PE backing material was used in the fire test. This is deemed sacrificial and not detrimental to the seal so any material can be considered. Please refer to Quelfire’s Knowledge Hub article: [Does backing material matter with linear gap seals?](#)

Test Condition	Designation
Integrity	E
Insulation	I
Horizontal Supporting Construction	H
Vertical Supporting Construction - Vertical	V
Vertical Supporting Construction - Horizontal	T
No Movement Capability	X
Movement Capability (%)	M00
Joint Width Range (mm)	W w1 to w2
Manufactured Splice	M
Field Splice	F
Manufactured and field Splice	B

Substrate	Depth	Backing Material	Classification
Concrete - Concrete	2:1 ratio (Width: Depth) & min 10mm (Single Side)	Any Material	E 240 EI 45 - H - X - F - W 00 to 50
	$\geq 25\text{mm}$ (Single Side)		E 240 EI 90 - H - X - F - W 00 to 50



Quelfire Products Required	
Product Code	Description
QSS310	QuelStop Intumescent Acrylic Sealant

Application	Page No.
100mm or thicker floors (Single side)	1
100mm or thicker floors (both sides)	2
150mm or thicker floors (Single side)	3

BS EN 1366-4: 2021 Section 13.3 Seal Position

BS EN 1366-4:2021 Section 13.3 states:
Test results are valid only for the position (see image below) in which the seal was tested, except that where a linear joint seal was fitted flush with the surface of the supporting construction and is exposed to the fire (see Specimen 2) the results will also be applicable to test specimen 3 and 5.

To be read in conjunction with:	UL EU Certificate 01192-CPR , Pages 15 & 16
Test & classification standard:	BS EN1366-4 & EN13501-2
Substrate minimum thickness:	150mm
Drawing Scale:	Not to Scale
Issue Number:	5
Date of Issue:	January 2025
Detail Reference:	QSS-LJ-H-02

Important Information:

- The supporting construction must be installed in accordance with the manufacturer’s guidelines and must be capable of achieving the required fire rating of the firestop.
- All services should be adequately supported on both sides of the firestop to ensure that no load is transferred onto the firestop seal.

Scope and Liability:

- Any Information provided by or on behalf of Quelfire Limited is provided for general information only. It is not intended to amount to advice on which you should rely. You must obtain professional or specialist advice before taking, or refraining from, any recommendation or action.
- The summary is not exhaustive and does not consider all issues relevant to the enquiry. It is limited to the information and time available to us. We have not verified any information made available to us by you or any other source, nor have we carried out a physical inspection of any property. We make no representations, warranties or guarantees, whether expressed or implied, that any information is accurate, complete or up to date.
- We do not accept a duty of care to you or any other person in respect of the enquiry, nor do we accept any liability to you or any other person for any loss arising out of or in connection with the enquiry or any reply provided by us. Different limitations and exclusions of liability arising as a result of the supply of any products or services by us to you, and these will be set out in our terms and conditions of supply, a copy of which is available on request.
- Full terms and conditions of sale are available at <https://www.quelfire.co.uk/terms-conditions-of-sale/>