

This standard detail is intended for general information only and all details should be checked against all relevant supporting test evidence, certification and installation guidelines. In line with the company's policy of continual development, details are subject to change and/ or withdrawal therefore you must ensure this is the latest published detail and instructions.

Additional Instructions

Flexible walls (Insulated or Uninsulated) to have a minimum 50mm wide metal or timber stud and minimum 2no. layers of 12.5mm Gypsum boards in accordance with EN 520 or Calcium Silicate boards which are CE Marked based on an ETA on both sides of the stud. For timber stud walls there shall be a minimum distance of 100mm from the penetration seal to any timber stud and the void between the stud and seal shall be filled with a minimum 100mm depth of Class A1 or A2 insulation.

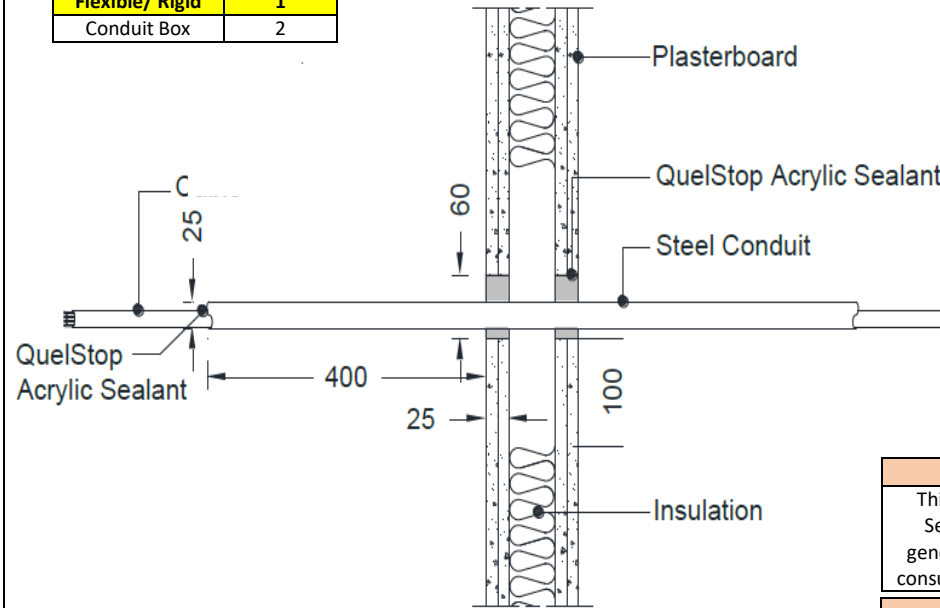
QuelStop Acrylic Sealant installed in the conduit between the cables and conduit.

Conduits can also be empty.

Test results obtained with flexible supporting walls may be applied to concrete or masonry elements of an overall thickness equal to or greater than that of the element used in the test.

BS EN 1366-3:2021 Section 13.7: The distance between the aperture edges of penetration seals in a building element shall be as tested or minimum 100mm. The distance between the aperture edge of a penetration seal and any other penetration (e.g., door) in a building element shall be minimum 200mm.

Conduit Type	Page No.
Flexible/ Rigid	1
Conduit Box	2



Quelfire Products Required	
Product Code	Description
QSS310	QuelStop Intumescent Acrylic Sealant

*** Conduit Bundle**

Up to 4no. steel conduits can be installed into an aperture 140mm wide x 60mm high. Conduits must be positioned in a linear row and can be 0mm from one edge but must be a minimum 10mm distance from all other edges of the aperture. QuelStop Acrylic Sealant is then installed to a minimum 25mm depth around the conduit bundle.

**** Test Evidence**

This detail will be included in a future update of the QuelStop Acrylic Sealant Classification Report. The fire test report detailed is not for general distribution but can be requested by the project's qualified fire consultant/ engineer if they contact the Quelfire Technical Team directly.

Spacing as per BS EN 1366-3: 2021, Section 13.7

* Please also consider any requirements that the wall manufacturer has with regards to spacing between openings.

Minimum distance from edge of opening to another aperture with a service penetration tested to BS EN 1366-3	100mm*
Minimum distance from edge of opening to another aperture with a penetration <u>not</u> tested to BS EN 1366-3	200mm*

Service Type	Size of Conduit	Size of Cable	Sleeve wall thickness	Conduit Protrusion	QuelStop Acrylic Sealant	Fire Rating
Rigid Steel Conduit	≤Ø25mm	≤Ø21mm	1.5mm	≥400mm	≤140mm wide ≤60mm high 25mm depth*	120 minutes Integrity C/C 60 minutes Insulation C/C
≤4 x Rigid Steel Conduit						
Flexible Steel Conduit	≤Ø40mm		2.2mm			120 minutes Integrity C/C 90 minutes Insulation C/C
≤4 x flexible Steel Conduit						
≤4 x Rigid or Flexible Steel Conduit	As above	As above	120 minutes Integrity C/C 60 minutes Insulation C/C			

To be read in conjunction with:	WF Test Report 542146B/R Specimen G1-G4**
Test standard:	BS EN1366-3
Substrate minimum thickness:	100mm
First Service Support:	≤400mm
Drawing Scale:	Not to Scale
Issue Number:	1
Date of Issue:	March 2025
Detail Reference:	QSS-FW100-05

Important Information:

- The supporting construction must be installed in accordance with the manufacturer's guidelines and must be capable of achieving the required fire rating of the firestop.
- All services should be adequately supported on both sides of the firestop to ensure that no load is transferred onto the firestop seal.

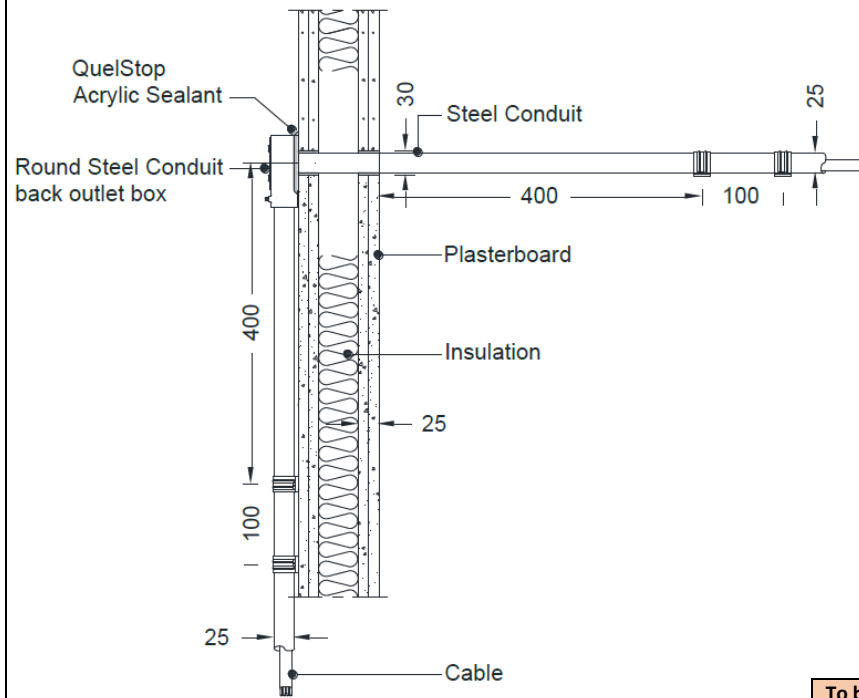
Scope and Liability:

- Any information provided by or on behalf of Quelfire Limited is provided for general information only. It is not intended to amount to advice on which you should rely. You must obtain professional or specialist advice before taking, or refraining from, any recommendation or action.
- The summary is not exhaustive and does not consider all issues relevant to the enquiry. It is limited to the information and time available to us. We have not verified any information made available to us by you or any other source, nor have we carried out a physical inspection of any property. We make no representations, warranties or guarantees, whether expressed or implied, that any information is accurate, complete or up to date.
- We do not accept a duty of care to you or any other person in respect of the enquiry, nor do we accept any liability to you or any other person for any loss arising out of or in connection with the enquiry or any reply provided by us. Different limitations and exclusions of liability arising as a result of the supply of any products or services by us to you, and these will be set out in our terms and conditions of supply, a copy of which is available on request.
- Full terms and conditions of sale are available at <https://www.quelfire.co.uk/terms-conditions-of-sale/>

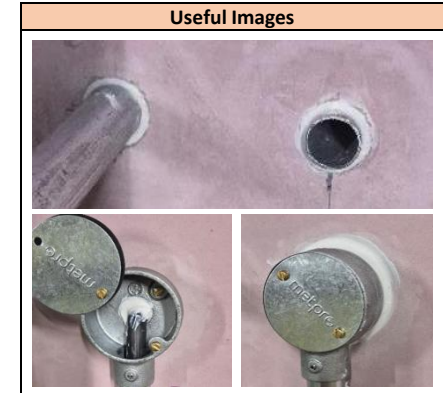
This standard detail is intended for general information only and all details should be checked against all relevant supporting test evidence, certification and installation guidelines. In line with the company's policy of continual development, details are subject to change and/ or withdrawal therefore you must ensure this is the latest published detail and instructions.

Additional Instructions	
Flexible walls (Insulated or Uninsulated) to have a minimum 50mm wide metal or timber stud and minimum 2no. layers of 12.5mm Gypsum boards in accordance with EN 520 or Calcium Silicate boards which are CE Marked based on an ETA on both sides of the stud. For timber stud walls there shall be a minimum distance of 100mm from the penetration seal to any timber stud and the void between the stud and seal shall be filled with a minimum 100mm depth of Class A1 or A2 insulation.	
QuelStop Acrylic Sealant installed in the conduit box around the cable. A bead of QuelStop Acrylic Sealant applied around the conduit socket box.	
Test results obtained with flexible supporting walls may be applied to concrete or masonry elements of an overall thickness equal to or greater than that of the element used in the test.	
BS EN 1366-3:2021 Section 13.7: The distance between the aperture edges of penetration seals in a building element shall be as tested or minimum 100mm. The distance between the aperture edge of a penetration seal and any other penetration (e.g., door) in a building element shall be minimum 200mm.	

Conduit Type	Page No.
Flexible/ Rigid	1
Conduit Box	2



Quelfire Products Required	
Product Code	Description
QSS310	QuelStop Intumescent Acrylic Sealant



** Test Evidence	
This detail will be included in a future update of the QuelStop Acrylic Sealant Classification Report. The fire test report detailed is not for general distribution but can be requested by the project's qualified fire consultant/ engineer if they contact the Quelfire Technical Team directly.	
Spacing as per BS EN 1366-3: 2021, Section 13.7	
* Please also consider any requirements that the wall manufacturer has with regards to spacing between openings.	
Minimum distance from edge of opening to another aperture with a service penetration tested to BS EN 1366-3	100mm*
Minimum distance from edge of opening to another aperture with a penetration not tested to BS EN 1366-3	200mm*

To be read in conjunction with:	WF Test Report 542146B/R Specimen K1-K2**
Test standard:	BS EN1366-3
Substrate minimum thickness:	100mm
First Service Support:	≤400mm
Drawing Scale:	Not to Scale
Issue Number:	1
Date of Issue:	March 2025
Detail Reference:	QSS-FW100-05

Service Type	Size of socket	Size of Conduit	Size of Cable	Sleeve wall thickness	Conduit Protrusion	QuelStop Acrylic Sealant	Fire Rating
Round Conduit Box connected to a rigid steel conduit	≤Ø65mm	≤Ø25mm	≤Ø21mm	1.5mm	≥500mm	2.5mm Annulus 25mm depth	120 minutes Integrity C/C 60 minutes Insulation C/C

Important Information:

- The supporting construction must be installed in accordance with the manufacturer's guidelines and must be capable of achieving the required fire rating of the firestop.
- All services should be adequately supported on both sides of the firestop to ensure that no load is transferred onto the firestop seal.

Scope and Liability:

- Any Information provided by or on behalf of Quelfire Limited is provided for general information only. It is not intended to amount to advice on which you should rely. You must obtain professional or specialist advice before taking, or refraining from, any recommendation or action.
- The summary is not exhaustive and does not consider all issues relevant to the enquiry. It is limited to the information and time available to us. We have not verified any information made available to us by you or any other source, nor have we carried out a physical inspection of any property. We make no representations, warranties or guarantees, whether expressed or implied, that any information is accurate, complete or up to date.
- We do not accept a duty of care to you or any other person in respect of the enquiry, nor do we accept any liability to you or any other person for any loss arising out of or in connection with the enquiry or any reply provided by us. Different limitations and exclusions of liability arising as a result of the supply of any products or services by us to you, and these will be set out in our terms and conditions of supply, a copy of which is available on request.
- Full terms and conditions of sale are available at <https://www.quelfire.co.uk/terms-conditions-of-sale/>