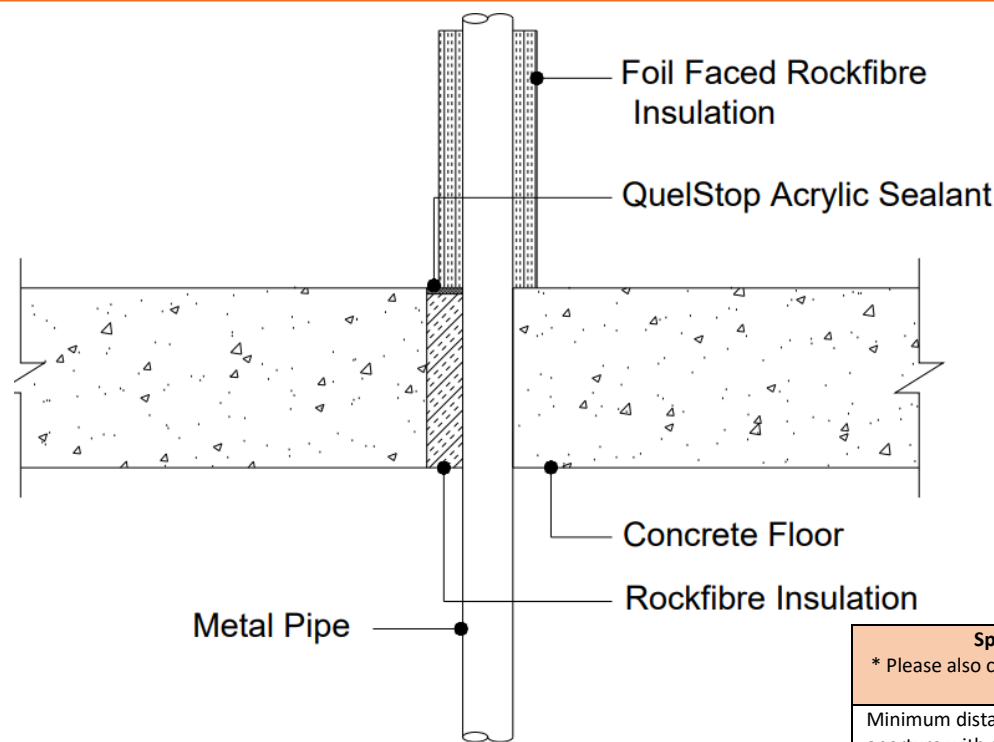


This standard detail is intended for general information only and all details should be checked against all relevant supporting test evidence, certification and installation guidelines. In line with the company's policy of continual development, details are subject to change and/ or withdrawal therefore you must ensure this is the latest published detail and instructions.

Additional Instructions
Rigid floors minimum $\geq 150\text{mm}$ thickness and to have a minimum density of $\geq 650\text{kg/m}^3$.
QuelStop Acrylic Sealant installed on top of the floor slab.
Metal pipe can be 0mm to edge of aperture
BS EN 1366-3:2021 Section 13.7: The distance between the aperture edges of penetration seals in a building element shall be as tested or minimum 100mm. The distance between the aperture edge of a penetration seal and any other penetration (e.g., door) in a building element shall be minimum 200mm.



Quelfire Products Required	
Product Code	Description
QSS310	QuelStop Intumescent Acrylic Sealant

Spacing as per BS EN 1366-3: 2021, Section 13.7	
* Please also consider any requirements that the floor manufacturer has with regards to spacing between openings.	
Minimum distance from edge of opening to another aperture with a service penetration tested to BS EN 1366-3	100mm*
Minimum distance from edge of opening to another aperture with a penetration not tested to BS EN 1366-3	200mm*

Service Type	Size of services	Pipe Wall Thickness	QuelStop Acrylic Sealant (Installed Top of Floor)	Backing Material	Pipe Insulation (Top side only)	Fire Rating
Copper/ Cast Iron & Steel Pipe*	$\leq \varnothing 42\text{mm}$	0.7 - 1.0mm	Maximum aperture 72mm 5mm depth	Stone wool or ceramic wool ($\geq 145\text{mm}$ depth $\geq 45\text{kg/m}^3$ density)	20mm Thick Foil faced Rock fibre insulation $\geq 120\text{kg/m}^3$, fitted $\geq 500\text{mm}$ (C/I)	180 minutes Integrity C/U 180 minutes Insulation C/U

* All metal pipe materials are covered which have a thermal conductivity equal or lower than the metal pipe tested and provided the melting point is at least equal or greater.

To be read in conjunction with:	WF Test Report 510323/R Specimen E & H
Test standard:	BS EN1366-3
Substrate minimum thickness:	150mm
First Service Support:	$\leq 400\text{mm}$
Drawing Scale:	Not to Scale
Issue Number:	1
Date of Issue:	September 2023
Detail Reference:	QSS-CF150-02

Important Information:

- The supporting construction must be installed in accordance with the manufacturer's guidelines and must be capable of achieving the required fire rating of the firestop.
- All services should be adequately supported on both sides of the firestop to ensure that no load is transferred onto the firestop seal.

Scope and Liability:

- Any Information provided by or on behalf of Quelfire Limited is provided for general information only. It is not intended to amount to advice on which you should rely. You must obtain professional or specialist advice before taking, or refraining from, any recommendation or action.
- The summary is not exhaustive and does not consider all issues relevant to the enquiry. It is limited to the information and time available to us. We have not verified any information made available to us by you or any other source, nor have we carried out a physical inspection of any property. We make no representations, warranties or guarantees, whether expressed or implied, that any information is accurate, complete or up to date.
- We do not accept a duty of care to you or any other person in respect of the enquiry, nor do we accept any liability to you or any other person for any loss arising out of or in connection with the enquiry or any reply provided by us. Different limitations and exclusions of liability arising as a result of the supply of any products or services by us to you, and these will be set out in our terms and conditions of supply, a copy of which is available on request.
- Full terms and conditions of sale are available at <https://www.quelfire.co.uk/terms-conditions-of-sale/>