

QRS-FW95-02

Rectangular Plastic Vent Duct penetrating wall tight to soffit



This standard detail is intended for general information only and all details should be checked against all relevant supporting test evidence, certification and installation guidelines. In line with the company's policy of continual development, details are subject to change and/ or withdrawal therefore you must ensure this is the latest published detail and instructions.

Additional Instructions

Flexible walls (Insulated or Uninsulated) to have a minimum 70mm wide stud and minimum 1no. layer of 12.5mm Gypsum boards in accordance with EN 520 or Calcium Silicate boards which are CE Marked based on an ETA on both sides of the stud.

Apertures / Letterboxes should be constructed in accordance with the fire rated wall system manufacturer's recommendations. See also ASFP Advisory notes 10 & 15.

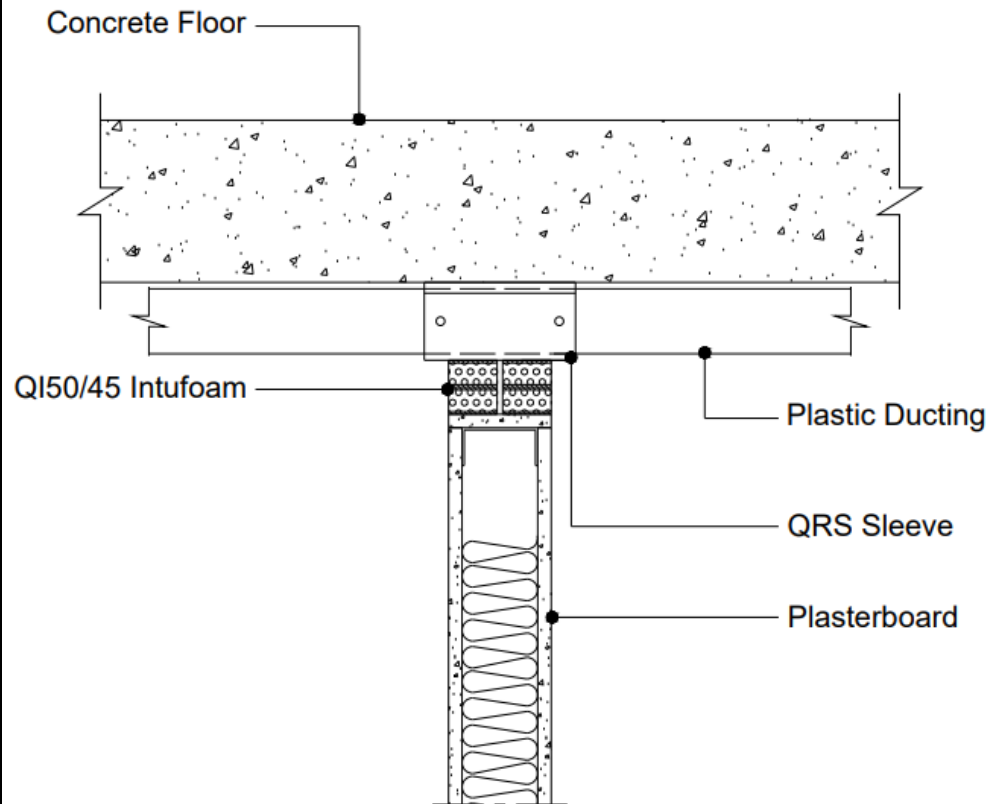
The framed and lined aperture must be as tight as possible around the QRS Fire Sleeve and QI Intufoam layer.

The gap between the bottom of the QRS Fire Sleeve and the plasterboard lining should be a maximum of 50mm to allow the installation of the Quelfire QI50/45 Intufoam.

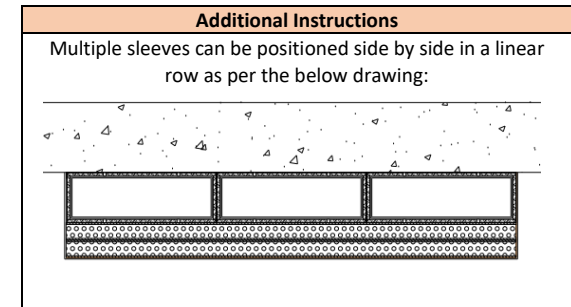
QI50/45 Intufoam is suitable for gaps between 50 and 25mm therefore in a 50mm gap has a range of 25mm compression.

The QRS should be centrally positioned and fitted so that it is protruding or at least flush with the outside of the face of both sides of the wall.

Test results obtained with flexible supporting walls may be applied to concrete or masonry elements of an overall thickness equal to or greater than that of the element used in the test.



Quelfire Products Required	
Product Code	Description
QRS204/60SS	Fire Sleeve for 205 X 60mm ducts
QRS220/90SS	Fire Sleeve for 220 X 90mm ducts
QI50/45	QI Intufoam



Service Type	Size of Services	Pipe Wall Thickness	Recommend Aperture (1 QRS)	Recommend Aperture (2 QRS)	Recommend Aperture (3 QRS)	QRS Fire Sleeve Required	Fire Rating
U-PVC Duct	204 X 60mm	1.5mm	220 mm Wide 122mm High*	440 mm Wide 122mm High*	660 mm Wide 122mm High*	QRS204/60SS	60 minutes Integrity U/U 60 minutes Insulation U/U
	220 x 90mm		242mm Wide 164mm High*	484mm Wide 164mm High*	727mm Wide 164mm High*	QRS220/90SS	60 minutes Integrity U/U 45 minutes Insulation U/U

To be read in conjunction with:	WF Test Report 508468/R
Test standard:	To the principles of BS EN1366-3
Substrate minimum thickness:	95mm
First service support:	≤400mm
Drawing Scale:	Not to Scale
Issue Number:	3
Date of Issue:	November 2023
Detail Reference:	QRS-FW95-02

Important Information:

- The supporting construction must be installed in accordance with the manufacturer's guidelines and must be capable of achieving the required fire rating of the firestop.
- All Services should be adequately supported either side of the firestop to ensure that no load is transferred onto the firestop seal.

Scope and Liability:

- Any Information provided by or on behalf of Quelfire Limited is provided for general information only. It is not intended to amount to advice on which you should rely. You must obtain professional or specialist advice before taking, or refraining from, any recommendation or action.
- The summary is not exhaustive and does not consider all issues relevant to the enquiry. It is limited to the information and time available to us. We have not verified any information made available to us by you or any other source, nor have we carried out a physical inspection of any property. We make no representations, warranties or guarantees, whether expressed or implied, that any information is accurate, complete or up to date.
- We do not accept a duty of care to you or any other person in respect of the enquiry, nor do we accept any liability to you or any other person for any loss arising out of or in connection with the enquiry or any reply provided by us. Different limitations and exclusions of liability arising as a result of the supply of any products or services by us to you, and these will be set out in our terms and conditions of supply, a copy of which is available on request.
- Full terms and conditions of sale are available at <https://www.quelfire.co.uk/terms-conditions-of-sale/>