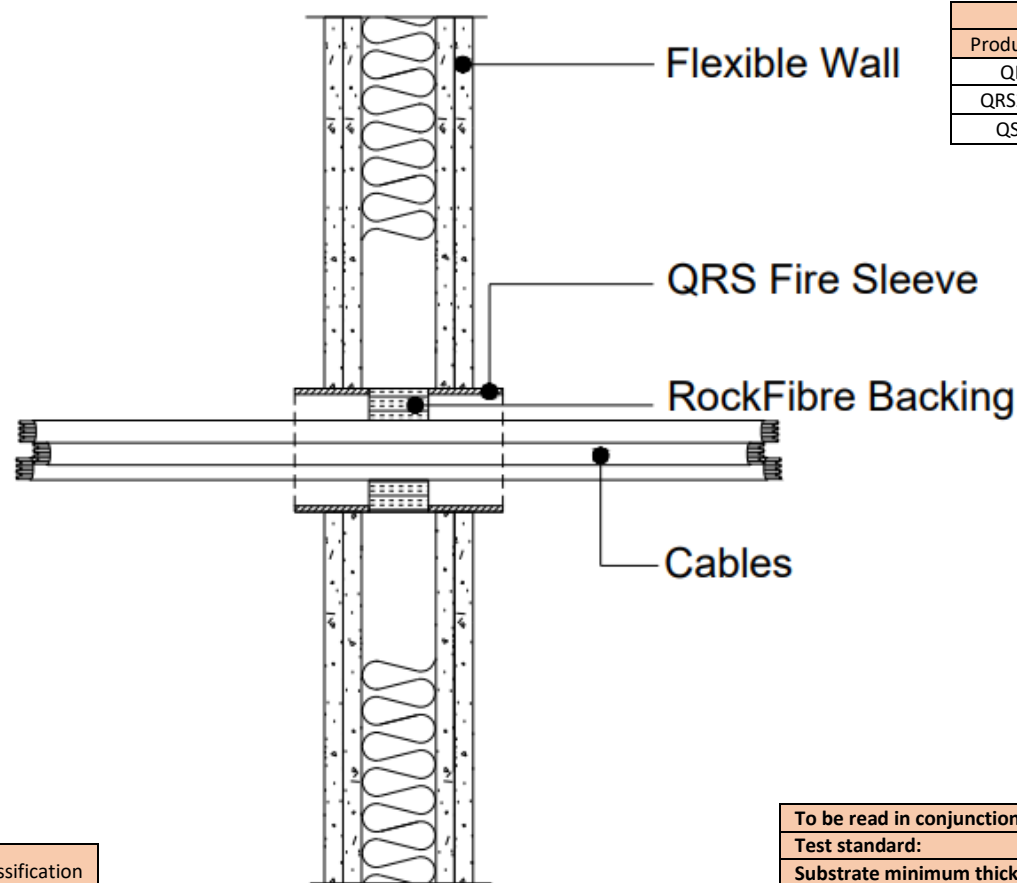


QRS-FW100-10

Data cables penetrating a flexible or rigid wall (100mm or thicker)

This standard detail is intended for general information only and all details should be checked against all relevant supporting test evidence, certification and installation guidelines. In line with the company's policy of continual development, details are subject to change and/ or withdrawal therefore you must ensure this is the latest published detail and instructions.

Additional Instructions
Flexible walls to have a minimum 50mm wide stud and a minimum 2 x layer of 12.5mm fire rated plasterboard on both sides of the stud.
100kg/m3 mineral wool packed around cables centrally within the QRS Fire Sleeve to a 40mm depth.
Apply QuelStop Intumescent Acrylic Sealant around the perimeter of the QRS Fire Sleeve to seal any small gaps $\leq 5\text{mm}$ between the plasterboard and the QRS Fire Sleeve.



Quelfire Products Required	
Product Code	Description
QRS75	Fire Sleeve
QRS205/60	Fire Sleeve
QSS310	QuelStop Intumescent Acrylic Sealant

Service Type	Size of Services	QRS Fire Sleeve	Classification
Bundle of CAT 5 cables	$\varnothing 60\text{mm}$ bundle of CAT 5 Data cables $\leq \varnothing 5\text{mm}$	QRS75	E 120 EI 60
	142mm wide x 55mm high bundle of CAT 5 Data cables $\leq \varnothing 5\text{mm}$	QRS205/60	E 90 EI60

To be read in conjunction with:	Test Report WF412164 – specimen H & I
Test standard:	BS EN1366-3: 2009
Substrate minimum thickness:	100mm
First service support:	$\leq 400\text{mm}$
Drawing Scale:	Not to Scale
Issue Number:	2
Date of Issue:	October 2020
Detail Reference:	QRS-FW100-10

Important Information:

- The supporting construction must be installed in accordance with the manufacturer's guidelines and must be capable of achieving the required fire rating of the firestop.
- All Services should be adequately supported either side of the firestop to ensure that no load is transferred onto the firestop seal.

Scope and Liability:

- Any Information provided by or on behalf of Quelfire Limited is provided for general information only. It is not intended to amount to advice on which you should rely. You must obtain professional or specialist advice before taking, or refraining from, any recommendation or action.
- The summary is not exhaustive and does not consider all issues relevant to the enquiry. It is limited to the information and time available to us. We have not verified any information made available to us by you or any other source, nor have we carried out a physical inspection of any property. We make no representations, warranties or guarantees, whether expressed or implied, that any information is accurate, complete or up to date.
- We do not accept a duty of care to you or any other person in respect of the enquiry, nor do we accept any liability to you or any other person for any loss arising out of or in connection with the enquiry or any reply provided by us. Different limitations and exclusions of liability arising as a result of the supply of any products or services by us to you, and these will be set out in our terms and conditions of supply, a copy of which is available on request.
- Full terms and conditions of sale are available at <https://www.quelfire.co.uk/terms-conditions-of-sale/>